

Important Contact Information:

Emergency (from a land line): Call 9-1-1

From a cell phone (program numbers in advance):

Berkeley Police510-981-5911

UC Police510-642-3333

Non-Emergency:

Berkeley Police510-981-5900

UC Police510-642-6760

Berkeley Fire Department510-981-3473

City Services:

Website: www.ci.berkeley.ca.us

General Information510-981-2489

Public Works, Refuse and Recycling.....510-981-6350

Rent Stabilization Board510-644-6128

Chancellor's Principles of Community

Developed collaboratively by students, faculty, staff, alumni, and issued by Chancellor Birgeneau, these principles assert the unique and fundamental value of each member of the UC Berkeley community. These principles also act as a guide for personal and collective behavior on and off campus, including:

- We recognize the intrinsic relationship between diversity and excellence in all our endeavors.
- We affirm the dignity of all individuals and strive to uphold a just community in which discrimination and hate are not tolerated.
- We respect the differences as well as the commonalities that bring us together and call for civility and respect in our personal interactions.

For the full list of principles visit:

<http://www.berkeley.edu/about/community.shtml>

Chancellor's Task Force on Student/Neighbor Relations

In 2005, UC Berkeley Chancellor Birgeneau established a task force to develop positive student/neighbor relations. Comprising student leaders, University and City staff and police, and neighborhood representatives, the task force brings students and neighbors together to create a greater sense of community in Berkeley's neighborhoods near the campus.



Dear Neighbor,

Welcome to Berkeley! Our neighborhoods are wonderful — lively, beautiful, with a diverse mix of students and families, homeowners and tenants.

The City of Berkeley and UC Berkeley have teamed up to promote good neighbor relations in the areas near campus. Everyone can help in this effort by getting to know their neighbors and following local laws.

Included in this packet is helpful information on how to get along with your neighbors, how to be a responsible host and guest, crime prevention and disaster preparedness tips, and information on how to access city and university services as a resident of Berkeley.

Welcome to the neighborhood!

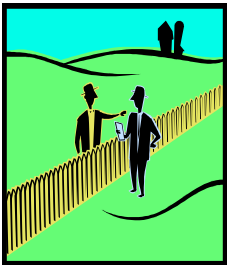
Developed by UC Berkeley Chancellor's Task Force on Student/Neighbor Relations

Good Neighbor Guidelines

Berkeley is a diverse and vibrant community. Take pride in being part of this great city. These simple guidelines can help you and your neighbors get along.

Top 5 Good Neighbor Tips:

- **Meet your neighbors.** Introduce yourself and exchange information.
- **Be considerate.** Keep noise under control during the day and at night.
- **Keep your neighborhood beautiful.** Always properly dispose of trash and promptly remove waste and recycling bins from curbside.
- **Respect differences.** Knowing and respecting differences in age, faith, schedules, and lifestyles can help you get along with your neighbors.
- **Communicate.** If your neighbors do something that bothers you, discuss it with them directly. Many potential problems can be resolved with a friendly conversation.



Community Noise

Berkeley Police Department 510-981-5900
<http://www.ci.berkeley.ca.us/police/>

- Often noise problems arise simply because people do not recognize that they may be bothering others.
- Realize that time and place matter. Mowing your lawn early in the morning or talk on your cell phone while walking home late at night may bother your neighbors.
- Before calling the police, politely inform your neighbor of a noise disturbance. Communicating can often solve and prevent problems.
- Repeated responses to noise complaints can lead to fines of up to \$500.

Trash, Dumping, and Recycling

Berkeley Public Works Department 510-981-6300
<http://www.ci.berkeley.ca.us/pw/>

- ⇒ Help keep Berkeley beautiful by putting waste where it belongs. The City recycles glass, cans, paper, cardboard and #1 and #2 plastics.
- ⇒ Avoid allowing unwanted furniture, clothing, and/or other items to collect on sidewalks, porches, and front lawns. Fines of up to \$1500 can be imposed for illegal dumping.
- ⇒ Call the City's Public Works Department to learn how to dispose of these items and for more information on recycling programs.



Parking

Berkeley Finance Department 510-981-7200
<http://www.ci.berkeley.ca.us/finance/residentialparking.html>

The City of Berkeley has established a Residential Preferential Parking Program which designates specific long-term parking for neighborhood residents. Contact the Berkeley Finance Department to learn how to obtain a parking permit and for information on the relevant parking restrictions in Berkeley.

Bicycle Friendly Berkeley

Office of Transportation 510-981-7010
<http://www.ci.berkeley.ca.us/transportation/Bicycling/bicycling.html>

- The city's bicycle boulevards enhance cyclists' safety and convenience and reduce bicycle traffic on streets with heavy automobile traffic. Cyclists are encouraged to use the boulevards whenever possible.
- California state law requires all bicycles to be licensed with the DMV. Visit: www.dmv.ca.gov for more information on attaining a license.
- All cyclists, pedestrians and automobile drivers should always be aware that they share the roadways with others and must follow all traffic laws.

Pets—Leash Law and Licensing

Animal Care Services 510-981-5890
<http://www.ci.berkeley.ca.us/animalservices/>

- If you own a cat or dog, you are required to keep your animal on a leash at all times when not on your property unless you are in a specified "off-leash" area. You are also responsible for picking up all animal waste.
- All dogs living in Berkeley are required to be licensed. You can purchase your dog license from the License and Collections Department at 1947 Center Street.
- If you see a stray or injured animal, please contact Animal Care Services.



Join Your Neighborhood Association!

City Manager, Neighborhood Services
<http://www.ci.berkeley.ca.us/neighborhoods/organizations.html>

Neighborhood associations can help you deal with most neighborhood-related issues and questions. Through the City Manager's Neighborhood Services Office, you can contact your association and learn more about their activities, including meetings and neighborhood watch opportunities.

PARTY



TIPS

Hosts

Before...

- Check your lease! If your landlord discourages parties or if you signed a no-party clause, you could jeopardize your lease.
- Notify your neighbors in advance.
- Set a definite start and finish time.

During...

- Serve food and non-alcoholic beverage options.
- Have at least one sober host to handle any problems.
- Keep the size of the party reasonable. Random people are only there to drink your beer and don't care if your place gets trashed or if you get into legal trouble.
- Keep the noise level down.
- If the party starts to get out of hand, call the police for help.

After...

- Clean up. Check for trash on your property and also on neighboring property which may have come from your party.
- Check with your neighbors the next day to see if they had any problems with your event.

Guests

- If you drink alcohol, pace yourself. Eat beforehand and snack while you drink. Alternate between alcoholic and non-alcoholic beverages.
- Don't combine alcohol and other drugs.
- Make your own drink and keep it in sight.
- Stick to your limit and look out for your friends.
- When the party is over, leave gracefully. Know how, when and with whom you will leave.
- Leave the party quietly and respect others' right to peace on your way back to your residence.

For more safe party tips visit: partysafe.berkeley.edu

Know the signs of alcohol poisoning

An alcohol overdose can lead to irreversible brain damage or even death.

Be aware of the following symptoms of alcohol poisoning:

- Passing out – semi-conscious or unconscious
- Slurred, incoherent speech
- Cold, clammy, pale or bluish skin
- Breathing is slow or irregular
- Excessive vomiting or vomiting while sleeping

Always be safe, not sorry. If you see any of these symptoms,

call emergency services immediately!

EMERGENCY NUMBERS

From a land line: 9-1-1

From a cell phone (program these numbers in advance):

Berkeley Police: 510-981-5911

UC Police: 510-642-3333

The serious consequences of breaking the law

Infraction or Misdemeanor

Penalty

Minor in possession Business and Professions Code 25662	Up to \$250 fine, community service and a suspension of driver's license
--	--

Serving alcohol to minors Business and Professions Code 25658	\$250-\$1000 fine and community service or up to 6 months in jail
--	---

Open container law/ Public consumption of alcohol Berkeley Municipal Code (BMC) 13.36.070	1st infraction: up to \$100 fine 2nd infraction: up to \$200 fine
---	--

Noise complaint BMC 13.40.030	1st response: Warning 2nd response: up to \$100 fine
----------------------------------	---

Public nuisance gathering (Ten or more people, within 60 day period) BMC 13.48.020	1st time: Warning 2nd time: automatic \$500 fine 3rd time: automatic \$1000 fine 4th time: automatic \$1500 fine
---	---

Disorderly Conduct, due to intoxication California Penal Code 647(f)	Up to \$1000 fine and up to 6 months in jail
--	--

Don't forfeit your lease! Some landlords have clauses regarding parties. Read your lease carefully.

BE SAFE AND SMART...

KNOW THE LAW AND AVOID PROBLEMS

Do not let a lapse in judgment jeopardize your student status.



- ◆ When a UC student is cited by Berkeley Police **within one-mile of campus**, the UC Police and the Office of Student Judicial Affairs are informed.
- ◆ This can result in **an official warning or more serious disciplinary action** by the university, in addition to any penalties the city may impose.

WHAT'S A PUBLIC NUISANCE GATHERING?

- According to city ordinance (BMC 13.48.020), any gathering of **10 or more people that hinders the “quiet enjoyment of private or public property”** is a public nuisance.
- Conduct such as: excessive noise or traffic, obstruction of public streets by crowds or vehicles, public drunkenness, serving alcohol to minors, fights, disturbances of the peace, and/or litter can cause your party to be deemed a public nuisance.

THE SECOND RESPONSE ORDINANCE

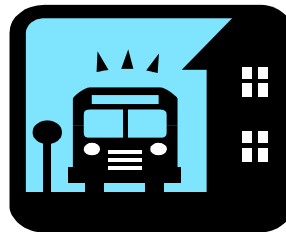
- First offenses merit warnings, public notices and orders to disperse. Further offenses that night, or at any time within a 60-day period, lead to **automatic fines of \$500 to \$1500**. (BMC 13.48.050)
- If your party is getting out of hand, do the smart thing and call the police yourself. Have them assist you in breaking up the crowd and avoid any further problems or penalties.

Get home safely at any time of night

The University provides a range of transportation alternatives to make sure you arrive at your residence safely and soundly.

Bear Walk: the free campus safe escort service

- A uniformed Community Service Officer walks you from your location to your near-campus residence.
- Call: 510-642-WALK (9255) between 6pm and 2am



Free Campus Night Safety Shuttles

- This extension of the BearTransit system is free to students and non-students.
- For schedule and route information please visit their website:
http://pt.berkeley.edu/transportation_alternatives/beartransit/index.html
- To-Your-Door routes (A, N Lines) operate between 7:30pm to 2:30am.
- Door-to-Door Owl Service pickups must be requested by phone at 510-642-6760 between 3am and 6am (O Line).

National Taxi Cab Dispatch Service: 800.TAXICAB

Keeping you and your neighborhood safe

Take these preventative steps to make your neighborhood more safe, secure, and prepared for natural disasters.

Crime Prevention

- ◆ Always lock all windows and doors when going out.
- ◆ Know your neighbors—be aware of who belongs in your neighborhood or apartment building and who does not belong.
- ◆ Do not leave purses, backpacks or laptops unattended.
- ◆ If you feel someone is following or watching you, go into a populated location, ask for help and call the police.

Life on the Fault – how to be prepared for a disaster



- ◇ Make an evacuation plan for your residence.
- ◇ Organize a neighborhood evacuation plan.
- ◇ Prepare an emergency supplies kit. Include water, non-perishable food, a flashlight and batteries, a first aid kit, blankets, and food for any pets.
- ◇ Make your home earthquake safe—secure potential hazards and know how to turn off the gas and electricity.
- ◇ Visit GetReadyBerkeley.org for more information on disaster preparedness.

Fire Safety

- * Maintain and regularly test smoke alarms. Replace smoke alarm batteries at least twice a year.
- * Do not overload electrical outlets and use extension cords properly.
- * Learn to properly use and maintain heating and cooking appliances.
- * Make sure your exits are accessible. Do not block exit ways with newspapers, bicycles or other items that could impair your escape.
- * Drink responsibly. In more than 50% of adult fire fatalities, victims were under the influence at the time of the fire.

Neighborhood Watch Programs

- The City of Berkeley has dozens of registered Neighborhood Watch groups that utilize neighbors' knowledge to prevent crime in Berkeley.
- Neighborhood Watch programs build cooperative relationships between police and the community by emphasizing crime prevention strategies like home security, neighborhood clean-ups, and education.
- Contact the Community Services Bureau at 510-981-5808 to join or start a Neighborhood Watch Program